



## Sexual Health Testing at the Point of Care\*

Primary care providers are an important component of sexual health care. Because many patients with STDs are asymptomatic, consistent screening practices at primary care have been shown to help identify carriers.



\* POC indicates decentralized testing by trained users

# STI Prominence Continues to Grow

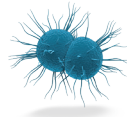
Even in the face of a pandemic, **2.4 million cases** of chlamydia, gonorrhea, and syphilis were reported.

—in the most recent CDC Annual Report<sup>1</sup>



## Chlamydia

1.6 million cases<sup>1</sup>



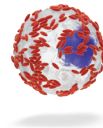
## Gonorrhea

667,769 cases<sup>1</sup>



## Trichomoniasis

2.6 million<sup>1</sup>



## Bacterial Vaginosis

21.2 million<sup>1</sup>

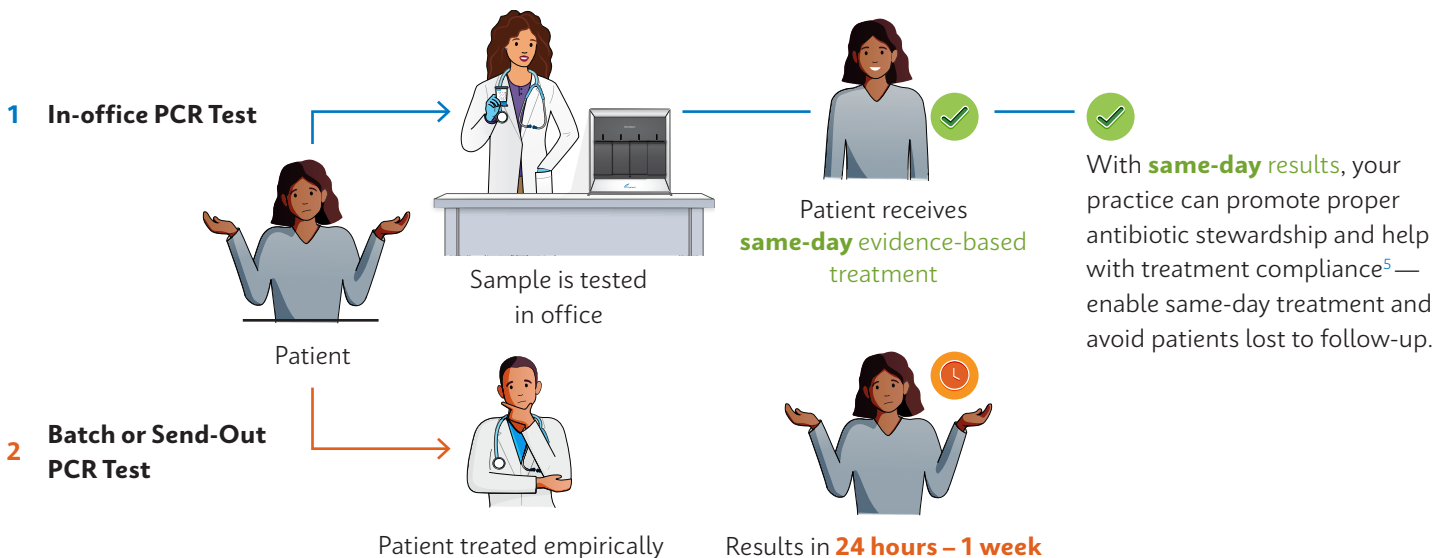
“

## Primary Care is at the Forefront of this Fight

Certain studies have found that *primary care clinics might diagnose up to half of the reported STDs.*<sup>2</sup>

“Another study that examined patients’ choice of providers for STD care found that, **with expanded health care insurance coverage, patient visits to primary care providers increased more than 100% and STD clinic visits decreased 20%.** This *increase in primary care visits* was largely attributable to a rise in the percentage of women seen for STD care<sup>3,4</sup>”

## Same-day Results are Critical for Reversing These Trends







## Cepheid's Solution for Sexual Health at Primary Care

- Xpert® CT/NG
- Xpert TV
- Xpert **Xpress** MVP



Fast, actionable data with most test results in less than one hour



Highly accurate PCR results for consistent patient management across the continuum of care



Simple workflow and walk-away testing for unparalleled efficiency

**Speed, plus Accuracy, plus Flexibility**

That's the **PCRplus** advantage. From Cepheid.



GeneXpert IV

GeneXpert® XVI

### Workflow: 3 Easy Steps

*Sample-In, Answer-Out Technology*

1

Obtain either urine or swab samples using the Cepheid collection kit



2

Transfer sample to cartridge



3

Insert cartridge and start test



“

“NAATs (PCR) are recognized as the **most sensitive testing option** for CT, NG & TV, often detecting 3–5x more TV than wet-mount microscopy.”<sup>6</sup>



## CATALOG INFORMATION

**Xpert® Xpress MVP** is on-demand detection and differentiation of Bacterial vaginosis, vulvovaginal candidiasis, and trichomoniasis

10 tests

XPRSMVP-10

**Xpert CT/NG** is on-demand detection and differentiation of *Chlamydia trachomatis* (CT) and *Neisseria gonorrhoeae* (NG)

10 tests

GXCT/NG-10

120 tests

GXCT/NG-120

**Xpert TV** is on-demand *Trichomonas vaginalis* (TV) testing for men and women

10 tests

GXTV-10

### SPECIMEN KITS REQUIRED FOR PRIMARY SAMPLE COLLECTION AND TREATMENT

Xpert Swab Specimen Collection Kit 50 tests ready-to-use individual kits

SWAB/G-50

Xpert Urine Specimen Collection Kit 50 tests ready-to-use individual kits

URINE/A-50

### CPT CODE INFORMATION

TEST NAME	DESCRIPTION	CPT CODE
Xpert CT/NG	<i>Chlamydia trachomatis</i> , amplified probe technique	CT: 87491
	<i>Neisseria gonorrhoeae</i> , amplified probe technique	NG: 87591
Xpert TV	<i>Trichomonas vaginalis</i> , amplified probe technique	87661

Learn more about Cepheid's PCR tests at [www.cepheid.com](http://www.cepheid.com)



Respiratory

HAI & Other  
Infectious Diseases

Blood Virology,  
Women's Health,  
& Sexual Health

TB & Emerging  
Infectious Diseases

Oncology &  
Human Genetics

- <https://www.cdc.gov/std/default.htm> accessed :June 30th 2022
- Brackbill RM, Sternberg MR, Fishbein M. Where do people go for treatment of sexually transmitted diseases? *Fam Plann Perspect* 1999;31:10–5. Cross Refexternal icon Pub Medexternal icon
- Drainoni ML, Sullivan M, Sequeira S, Bacic J, Hsu K. Health reform and shifts in funding for sexually transmitted infection services. *Sex Transm Dis* 2014;41:455–60.
- Sexton J, Garnett G, Røttingen JA. Metaanalysis and metaression in interpreting study variability in the impact of sexually transmitted diseases on susceptibility to HIV infection. *Sex Transm Dis* 2005;32:351–7.
- Gaydos C, et al. Use of a Rapid Diagnostic for Chlamydia trachomatis and Neisseria gonorrhoeae for Women in the Emergency Department Can Improve Clinical Management: Report of a Randomized Clinical Trial. *Ann Emerg Med*. Sept 2018.
- Workowski KA, et al. Sexually transmitted diseases treatment guidelines, 2015. *MMWR Recomm Rep*. 2015 Jun 5;64(RR-03):1-137 US-IVD. *In Vitro* Diagnostic Medical Device.

#### CORPORATE HEADQUARTERS

904 Caribbean Drive  
Sunnyvale, CA 94089 USA

TOLL FREE +1.888.336.2743  
PHONE +1.408.541.4191  
FAX +1.408.541.4192

#### EUROPEAN HEADQUARTERS

Vira Solelh  
81470 Maurens-Scopont France

PHONE +33.563.82.53.00  
FAX +33.563.82.53.01  
EMAIL [cepheid@cepheid.com](mailto:cepheid@cepheid.com)

[www.Cepheid.com](http://www.Cepheid.com)

© 2022 Cepheid 0951-01